



## 20<sup>th</sup> Annual Southern Chesapeake Leukemia Cup Regatta

July 13-15, 2018 *(dates corrected)*

The Leukemia & Lymphoma Society and Fishing Bay Yacht Club are co-organizing authorities for this regatta. Fishing Bay Yacht Club is the Host Club, and racing will be conducted at the mouth of the Rappahannock River.

### RAPPAHANNOCK COURSE GENERAL INFORMATION, FOR LEUKEMIA AND CRUISING CLASSES

- A. The 20th ANNUAL LEUKEMIA CUP REGATTA SOUTHERN CHESAPEAKE SAILING SERIES is sponsored by Fishing Bay Yacht Club, Stingray Harbor Yacht Club, and Hampton Yacht Club, and hosted by Deltaville Maritime Museum in Deltaville, VA. This regatta will consist of one or more races to be sailed by the Leukemia (Cruising) and Classic classes on the WEST course (see sailing instructions below). Other classes will race on other courses at the event (Sailing Instructions distributed separately). The races and associated activities are to benefit The Leukemia & Lymphoma Society.
- B. Race headquarters, social events, and registration will be at Deltaville Maritime Museum, 287 Jackson Creek Rd, Deltaville, VA 23043. There will be registration, dinner, and Gala Auction beginning at 1730 Friday, and a brief skippers meeting at 1930 hours. Saturday evening will feature social events, dinner, silent & live auctions, awards, music and dancing beginning at 1730. Overall series awards for the West Course will be held Saturday evening during the events at the Deltaville Maritime Museum & Holly Point Natural Park.
- C. The legal drinking age in Virginia is 21. Minors will not be served and proof of age will be required. Intoxication or discourteous behavior will be grounds for expulsion from the events. Boat captains and owners will be responsible for the actions of their crew. A BOAT IS SUBJECT TO IMMEDIATE DISQUALIFICATION BY THE PROTEST COMMITTEE IF ANY UNDER-AGE CREW IS FOUND TO BE ILLEGALLY CONSUMING ALCOHOL.

### SCHEDULE OF EVENTS –RAPPAHANNOCKCOURSE

Friday, July 13

1730-2000 Late Registration, Dinner, Gala Auction and Social, Deltaville Maritime Museum. Dinner tickets available in advance with a limited number at the event  
1930 Skippers' Meeting for All Classes

Saturday, July 14

1100 Warning Signal for first race; subsequent races to follow  
1745-2000 Awards at 1745, Dinner and Social at 1800 at Deltaville Maritime Museum

Sunday, July 15  
1000 Warning Signal for first race; subsequent races to follow  
1600 (Approx.) Awards Ceremony, Fishing Bay Yacht Club

*First Mate Sponsors*



## RAPPAHANNOCK COURSE SAILING INSTRUCTIONS

### 1 RULES

- 1.1 The regatta will be governed by the *Racing Rules of Sailing* (RRS).
- 1.2 The notation "(DP)" after a rule means that, at the discretion of the Protest Committee, the penalty for a breach of that rule may be less than DSQ.

### 2 ENTRIES

- 2.1 Eligible boats may be entered by completing online registration at <http://www.leukemicup.org/va>. Late registration will be available Friday, July 7, and Saturday morning at Deltaville Maritime Museum.
- 2.2 Boats not having a current valid PHRF rating will be assigned a provisional rating which may not be appealed.
- 2.4 Boats will be sailed allowing only one (1) headsail downwind. Boats are not permitted to change headsails downwind to gennakers or spinnakers.

### 3 NOTICES TO COMPETITORS

- 3.1 Notices to competitors will be posted on the official notice board(s) located at the Deltaville Maritime Museum on Friday and Saturday, and located at Fishing Bay Yacht Club on Sunday, and may also be available on the Yacht Scoring site ([www.yachtscoring.com](http://www.yachtscoring.com)).
- 3.2 A competitors' (Skippers) meeting will be held at 1930 on Friday at Deltaville Maritime Museum.

### 4 CHANGES TO SAILING INSTRUCTIONS

- 4.1 Any change to the sailing instructions will be posted before 0800 on the day it will take effect, except that any change to the schedule of races will be posted by 2000 on the day before it will take effect.

- 4.2 The Race Committee may make changes to the sailing instructions on the water by displaying Code Flag "L" and announcing such changes on VHF channel 65.

### 5 SIGNALS MADE ASHORE

- 5.1 Signals made ashore will be displayed from the mast at the Deltaville Maritime Museum.
- 5.2 When flag AP is displayed ashore, '1 minute' is replaced with 'not less than 60 minutes' after flag AP is lowered ashore with one sound signal. This changes race signal AP.
- 5.3 When a change to the sailing instructions is posted, Code Flag "L" will be displayed at Maritime Museum.

### 6 SCHEDULE OF RACES

- 6.1 The scheduled time of the warning signal for the first race on Saturday is 1100.
- 6.2 The scheduled time of the warning signal for the first race on Sunday will be 1000.
- 6.3 Two or more races will be run each day (time and weather permitting).

### 7 CLASS FLAGS

- 7.1 Class divisions will be posted on the official notice board, with class flags as follows:

Cruising 1	White
Cruising 2	Blue
Classic	Green
- 7.2 The Leukemia Cup class flags for the Cruising and Classic classes will be colored ribbons, and must be flown from the backstay of the boat while racing (DP).
- 7.3 The class flags (ribbons) will be in the information package given out at registration.

*First Mate Sponsors*



## WEST (RAPPAHANNOCK) COURSE SAILING INSTRUCTIONS

7.4 Class Flags used to signal the start of each class shall be a flag of the same color as the issued class (ribbon) flag.

### 8 RACING AREAS

Racing will be conducted at the mouth of the Rappahannock River in the vicinity of buoy Rappahannock River "3", as shown on Attachment 1.

### 9 OFFICIAL BOATS

The Race Committee Signal Boat will be anchored in the area shown in Attachment 1. The exact position will be determined based on the wind direction.

### 10 MARKS

10.1 Start and finish will be between the signal boat and the adjacent mark. No later than the warning signal, the signal boat will display the approximate compass bearing of the first leg.

10.2 The rounding marks will be inflatable cylinders or tetrahedrons positioned as designated in the "Example Rappahannock Course Detail" Diagram in Attachment 1.

10.3 The first rounding mark of the course will be positioned at the end of "Leg 1", upwind of the Start/Finish mark. The distance from the Start/Finish mark will depend on wind velocity at the time.

10.4 The second rounding mark will be positioned at the end of "Leg 2".

10.5 Competitors shall then round the Start/Finish mark at the end of "Leg 3", leaving it to port, crossing the finish line as they round.

### 11 CHECK IN

Each boat shall sail by the race committee signal boat, hail her sail number and be acknowledged by the race committee. This shall be done before a boat starts the first race in which she competes that day (DP).

### 12 THE START

12.1 Races will be started by using rule 26. Please refer to Attachment 2 for Rule 26 details.

12.2 The starting line will be between a staff or halyard displaying an orange flag on the race committee signal boat and the course side of the Start/Finish mark. The Start/Finish mark will be an inflatable buoy.

12.3 The race committee intends to announce boats identified as OCS on VHF radio. Rappahannock Course will broadcast on VHF channel 65. Failure to transmit information, receive such notification, or the order in which recalled boats are broadcast will not be grounds for redress. This changes RRS 62.

12.4 Boats whose warning signal has not been made shall avoid the starting area (DP).

12.5 A boat starting later than 10 minutes after her starting signal will be scored Did Not Start. This changes rule A4

12.6 Additional races each day (time and weather permitting) shall be signaled from the committee boat by displaying the Second Substitute while boats are finishing the first race. The Warning signal will be given as soon as possible after the end of the first race. A series of horn blasts will be used to indicate that the Warning signal of the additional race(s) is imminent

### 13 THE FINISH

13.1 The finishing line will be between a staff or halyard displaying an orange flag on the race committee signal boat and an adjacent inflatable mark that must be left to port. If a shortened course is necessary, code flag "S" on the race committee signal or finish boat will replace an orange flag.

13.2 Each boat will receive a sound signal when the boat finishes. After finishing, each boat must

*First Mate Sponsors*



## WEST (RAPPAHANNOCK) COURSE SAILING INSTRUCTIONS

- keep clear of the racing area, including the finishing area.
- 14 **SHORTEN COURSE**  
The race committee may shorten the course at any mark by displaying the code flag “S” when anchored. The finish line will be between the mark and a staff or halyard displaying code flag “S” on the race committee finish boat.
- 15 **TIME LIMITS**
- 15.1 Time limit is 2 hours for each class
- 15.2 Boats that have not finished and are still racing three hours after their start will be scored as ‘Time Limit Expired’ (TLE) and will be scored one more point than number of finishers, however no boat will receive a score worse than the number of points awarded a DNF. This changes rule 35 and Appendix A.
- 15.3 Boats that have not finished and are still racing but are substantially delaying the start of the next race of the day may be requested by the Race Committee to return to the starting area and accept a score of ‘Time Limit Expired’ (TLE). A boat complying with this request from the Race Committee shall be scored one more point than number of finishers, however no boat will receive a score worse than the number of points awarded a DNF. This changes rule 35 and Appendix A.
- 15.4 The race committee may abandon a race. Verbal notice of abandonment will be broadcast over VHF Channel 65. The race committee will also display the code flag “N” and possibly other signals as described in Rule “Race Signals”.
- 16 **PROTESTS AND REQUESTS FOR REDRESS**
- 16.1 A boat intending to protest another boat must notify the race committee by hail (or VHF radio Channel 65) immediately after finishing or retiring.
- 16.2 Protest forms are available at the Race Committee boat and at the Race Office, which on Saturday is at the Tea House at the Deltaville Maritime Museum, and on Sunday is at Fannie’s House at Fishing Bay Yacht Club. Protests and requests for redress or reopening shall be delivered to the Race Office within the appropriate time limit.
- 16.3 The protest time limit is 60 minutes after the arrival of the race committee signal boat at the dock. The same time limit applies to protests by the race committee and protest committee about incidents they observe in the racing area and to requests for redress. This changes rules 61.3 and 62.2.
- 16.4 If the RC posts a list of boats scored OCS or ZFP on the Notice Board before the Protest Time Limit, a request for redress based on the posted score shall be made no later than fifteen (15) minutes after the Protest Time Limit. This changes RRS 62.2.
- 16.5 The race committee will post the end of the protest time limit on the notice board.
- 16.6 Notices will be posted on the notice board within 15 minutes of the protest time limit to inform competitors of hearings in which they are parties or named as witnesses. Hearings on Saturday will be held in Tea House at the Deltaville Maritime Museum. Hearings on Sunday will be held upstairs in the main clubhouse at Fishing Bay Yacht Club.
- 16.7 Each boat must check the Official Notice Board to determine if it is involved in a protest. A hearing may be held if a party or witness is not available.
- 16.8 Notices of protests by the race committee or protest committee will be posted to inform boats under rule 61.1(b).
- 17 **SCORING**

*First Mate Sponsors*



## WEST (RAPPAHANNOCK) COURSE SAILING INSTRUCTIONS

Scoring will be in accordance with the Low Point System of Appendix A. There will be no throw-outs.

### 18 SAFETY REGULATIONS

18.1A boat that retires from a race or leaves the racing area prior to the end of racing shall notify the race committee as soon as practical. The race committee can be notified by contacting any race committee boat verbally, or by VHF channel 65 (DP).

18.2A boat shall carry all equipment required by her class rules, and the U. S Coast Guard. If not so specified, she shall also carry one USCG approved PFD, of the appropriate class, for each person on board.

### 19 CRAB POTS

Any vessel fouling commercial crab pot(s) and severing or dislocating them by more than 100' is required to record the license number from the pot float, report the event (with vessel contact information) to VMRC by calling [757-247-2127](tel:757-247-2127), and reimburse the licensee for any loss if so claimed.

### 20 TRASH DISPOSAL

A competitor shall not intentionally put trash in the water.

### 21 RADIO COMMUNICATION

21.1 Except in emergency, a boat shall neither make radio transmissions while racing nor receive radio communications not available to all boats. This restriction also applies to mobile telephones.

21.2 Race Committee broadcasts are a courtesy only. Failure of the Race Committee to broadcast or a competitor to receive a broadcast from the Race Committee shall not be grounds for redress under Rule 62.1(a).

### 22 PRIZES

Prizes will be awarded to the boats placing first, second, and third in the regatta.

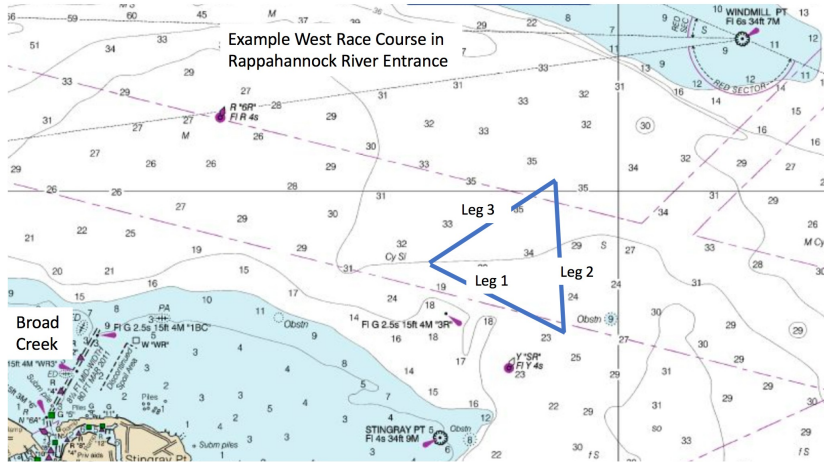
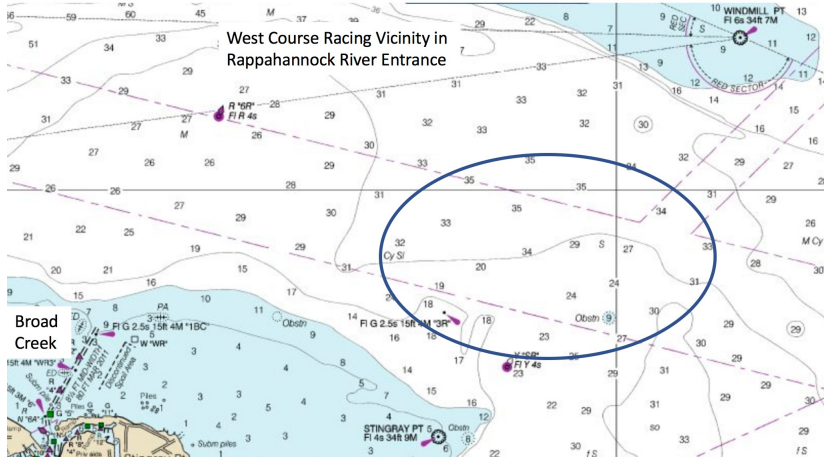
### 23 DISCLAIMER OF LIABILITY

Competitors participate in the regatta entirely at their own risk. See rule 4, Decision to Race. The organizing authority will not accept any liability for material damage or personal injury or death sustained in conjunction with or prior to, during, or after the regatta.

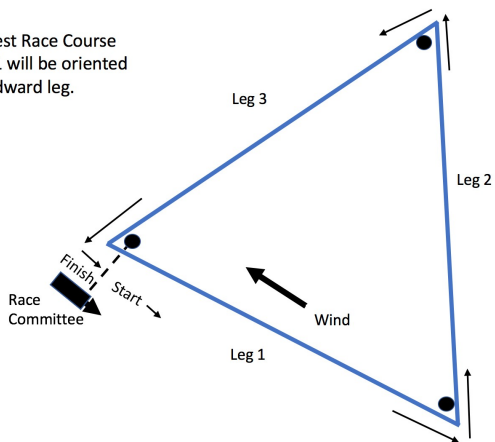
*First Mate Sponsors*



# WEST (RAPPAHANNOCK) COURSE SAILING INSTRUCTIONS



Example West Race Course Detail. Leg 1 will be oriented to be a windward leg.



First Mate Sponsors



WEST (RAPPAHANNOCK) COURSE SAILING INSTRUCTIONS

ATTACHMENT 2 - Reprint of Rule 26

RRS Rule 26 STARTING RACES

Races shall be started by using the following signals. Times shall be taken from the visual signals; the absence of a sound signal shall be disregarded.

<u>Signal</u>	<u>Flag and sound</u>	<u>Minutes before Starting signal</u>
Warning	Class flag; 1 sound	5
Preparatory	P flag; 1 sound	4
One-minute	Preparatory flag removed; 1 long sound	1
Starting	Class flag removed; 1 sound	0

The warning signal for each succeeding class shall be made with or after the starting signal of the preceding class.

Version 4, July 10, 2018

Many Thanks to our Sponsors:



Suez  
The London Company  
Chesapeake Boat Works  
C & F Mortgage  
Latell Sail Makers

Local Voice Media  
Fishing Bay Yacht Club  
Stingray Harbour Yacht Club  
J & W Seafood  
Deltaville Market

Wine for Cures  
Allegra Richmond  
David & Laura Christian  
Bill & Debbie Brooks  
Bob & Deb McKinley

National Supporters



First Mate Sponsors





## 20<sup>th</sup> Annual Southern Chesapeake Leukemia Cup Regatta July 13-15, 2018

The Leukemia & Lymphoma Society and Fishing Bay Yacht Club are co-organizing authorities for this regatta. Fishing Bay Yacht Club is the Host Club, and racing will be conducted in the Piankatank River and Chesapeake Bay at the mouth of the Piankatank River.

### **EAST COURSE SAILING INSTRUCTIONS**

#### **1 RULES**

- 1.1 The regatta will be governed by the rules as defined in *The Racing Rules of Sailing*.
- 1.2 The notation "(DP)" after a rule means that, at the discretion of the Protest Committee, the penalty for a breach of that rule may be less than DSQ.

#### **2 NOTICES TO COMPETITORS**

Notices to competitors will be posted on the official notice board(s) located at the Deltaville Maritime Museum on Friday and Saturday, and located at Fishing Bay Yacht Club on Sunday, and may also be available on the Yacht Scoring site ([www.yachtscoring.com](http://www.yachtscoring.com)).

#### **3 CHANGES TO SAILING INSTRUCTIONS**

- 3.1 Any change to the sailing instructions will be posted before 0800 on the day it will take effect, except that any change to the schedule of races will be posted by 2000 on the day before it will take effect.
- 3.2 The Race Committee may make changes to the sailing instructions on the water by displaying Code Flag "L" and announcing such changes on VHF channel 72.

#### **4 SIGNALS MADE ASHORE**

- 4.1 Signals made ashore will be displayed from the mast at the Deltaville Maritime Museum.
- 4.2 When flag AP is displayed ashore, '1 minute' is replaced with 'not less than 60 minutes' after flag AP is lowered ashore with one sound signal. This changes race signal AP.
- 4.3 When a change to the sailing instructions is posted, Code Flag "L" will be displayed at the Maritime Museum.

#### **5 SCHEDULE OF RACES**

- 5.1 The scheduled time of the warning signal for the first race on Saturday is 1100.
- 5.2 The schedule time of the warning signal for the first race on Sunday is 1000.
- 5.3 If the Race Committee intends to start another race on the same day it will display the second substitute (with no sound) while boats are finishing. Two races or more will be run each day (time and weather permitting).

*First Mate Sponsors*



## EAST COURSE SAILING INSTRUCTIONS

**5.4** On Sunday, no warning signal will be made after 1500.

### **6 CLASS FLAGS**

Class flags will be:

<i>Class</i>	<i>Flag</i>
PHRF A	9
PHRF B	6
PHRF C	7
PHRF NS	5
One-Design	Class Flag

### **7 RACING AREAS**

Attachment 1 shows the location of racing area.

### **8 THE COURSES**

**8.1** The diagrams in Attachment 2 show the courses, including the approximate angles between legs, the order in which marks are to be passed, and the side on which each mark is to be left.

**8.2** No later than the warning signal, the race committee signal boat will display the approximate compass bearing of the first leg.

### **9 MARKS**

**9.1** Marks will be orange inflatables.

**9.2** New marks, as provided in instruction 12.1, will be yellow inflatables.

**9.3** The starting and finishing marks will be orange inflatables.

### **10 CHECK IN**

**10.1** Each boat shall sail by the race committee signal boat, hail her sail number and be acknowledged by the race committee. This shall be done before a boat starts the first race in which she competes each day (DP).

### **11 THE START**

**11.1** Races will be started by using rule 26.

**11.2** An Attention Signal consisting of a series of short sounds may be made approximately one minute before the Warning Signal for each race. This is not a timed signal.

**11.3** See 12.2 in the event of a significant wind shift between fleet starts.

**11.4** The starting line will be between a staff or halyard displaying an orange flag on the race committee signal boat and the course side of the pin end mark.

**11.5** A Limit Buoy may be tethered to the stern of the RC Signal Boat.

*First Mate Sponsors*



## EAST COURSE SAILING INSTRUCTIONS

- 11.6** Boats whose warning signal has not been made shall avoid the starting area (DP). The Starting Area is defined as the area extending 100 yards beyond each end of the starting line and 150 yards behind the line and its extensions.
- 11.7** A boat starting later than 5 minutes after her starting signal will be scored Did Not Start. This changes rule A4.
- 11.8** The race committee intends to announce boats identified as OCS on VHF radio. East Course will broadcast on VHF 72. Failure to transmit information, receive such notification, or the order in which recalled boats are broadcast will not be grounds for redress. This changes RRS 62.

## **12 CHANGE OF THE NEXT LEG OF THE COURSE**

- 12.1** To change the next leg of the course, the race committee will lay a new yellow mark (or move the finishing line) and remove the original mark as soon as practicable. When in a subsequent change a new mark is replaced, it will be replaced by an original mark.
- 12.2** If there is a significant wind shift before a preparatory signal, the race committee may signal a change of course for classes/fleets not yet started. In such case, at the preparatory signal, flag "C" will be displayed on the signal boat with repetitive sound signals and will remain displayed until the preparatory signal is lowered. The first mark will be the new/change mark. The bearing to the mark will be posted and announced over the designated VHF channel.

## **13 THE FINISH**

- 13.1** The finishing line will be between a staff displaying an orange flag on the race committee boat at the starboard end and the course side of the port-end finishing mark. For courses "2", "4", and "6", the finishing mark will be placed on the side of the RC Boat opposite that of the starting mark.

## **14 TIME LIMITS AND TARGET TIMES**

- 14.1** Time limit is 2 hours for each class.
- 14.2** Boats that have not finished and are still racing 30 minutes after the first boat finishes will be scored as 'Time Limit Expired' (TLE) and will be scored two points more than number of finishers, however no boat will receive a score worse than the number of points awarded a DNF. This changes rule 35 and Appendix A4.

## **15 PROTESTS AND REQUESTS FOR REDRESS**

- 15.1** A boat intending to protest another boat must notify the race committee by hail (or VHF radio Channel 72) immediately after finishing or retiring.
- 15.2** Protest forms are available at the Race Committee boat "Mr. Roberts II" and at the Race Office, which on Saturday is at the Tea House at the Deltaville Maritime Museum, and on Sunday is at Fannie's House at Fishing Bay Yacht Club. Protests and

*First Mate Sponsors*



## EAST COURSE SAILING INSTRUCTIONS

requests for redress or reopening shall be delivered to the Race Office within the appropriate time limit.

- 15.3** The protest time limit is 60 minutes after the arrival of the Race Committee signal boat at the dock. The same time limit applies to protests by the Race Committee and Protest Committee about incidents they observe in the racing area and to requests for redress. This changes rules 61.3 and 62.2. The Race Committee will post the end of the protest time limit on the Notice Board at the Race Office and on the Event website ([www.yachtscoring.com](http://www.yachtscoring.com)).
- 15.4** Notices will be posted no later than 15 minutes after the protest time limit to inform competitors of hearings in which they are parties or named as witnesses. Hearings will begin at the time posted. Hearings on Saturday will be held in Tea House at the Deltaville Maritime Museum. Hearings on Sunday will be held upstairs in the main clubhouse at Fishing Bay Yacht Club.
- 15.5** Each boat must check the Official Notice Board to determine if it is involved in a protest. A hearing may be held if a party or witness is not available.
- 15.6** Notices of protests by the race committee or protest committee will be posted to inform boats under rule 61.1(b).
- 15.7** Breaches of instructions 17, 18, and 19 will not be grounds for a protest by a boat, and (DP) applies if otherwise protested. This changes rule 60.1(a).

## **16 SCORING**

- 16.1** The scoring system is the Low Point System of Appendix A. There will be no throw-outs.

## **17 SAFETY REGULATIONS**

- 17.1** A boat that retires from a race or leaves the racing area prior to the end of racing shall notify the race committee as soon as practical. The race committee can be notified by contacting any race committee boat verbally, or by VHF channel 72.
- 17.2** All PHRF boats competing in the regatta must comply with all PHRF Equipment and Accommodations Standards. If not so specified, she shall also carry one USCG approved PFD, of the appropriate class, for each person on board.
- 17.3** The legal drinking age in Virginia is 21. Minors will not be served and proof of age will be required. Intoxication or discourteous behaviour will be grounds for expulsion from the events. Boat captains and owners will be responsible for the actions of their crew. A BOAT IS SUBJECT TO IMMEDIATE DISQUALIFICATION BY THE PROTEST COMMITTEE IF ANY UNDER-AGE CREW IS FOUND TO BE ILLEGALLY CONSUMING ALCOHOL.

## **18 RADIO COMMUNICATION**

- 18.1** The Race Committee Boat will use VHF Channel 72 to communicate with boats on the East Course.

*First Mate Sponsors*



## EAST COURSE SAILING INSTRUCTIONS

**18.2** The Race Committee will not respond to transmissions from competitors except to acknowledge retirements, protests, penalties reported or taken, or requests for emergency assistance.

**18.3** Race Committee broadcasts are a courtesy only. Failure of the Race Committee to broadcast or a competitor to receive a broadcast from the Race Committee shall not be grounds for redress under Rule 62.1(a).

**18.4** Except in an emergency, a boat shall neither make radio transmissions while racing nor receive radio communications not available to all boats. This restriction also applies to mobile telephones.

### **19 CRAB POTS**

Any vessel fouling commercial crab pot(s) and severing or dislocating them by more than 100' is required to record the license number from the pot float, report the event (with vessel contact information) to VMRC by calling [757-247-2127](tel:757-247-2127), and reimburse the licensee for any loss if so claimed.

### **20 PRIZES**

Prizes will be awarded to the boats placing first, second, and third in the regatta.

### **21 DISCLAIMER OF LIABILITY**

Competitors participate in the regatta entirely at their own risk. See rule 4, Decision to Race. The organizing authority will not accept any liability for material damage or personal injury or death sustained in conjunction with or prior to, during, or after the regatta.

2018 East Course SIs 06-26-2018

*First Mate Sponsors*



EAST COURSE SAILING INSTRUCTIONS

Attachment 1 – Racing Area

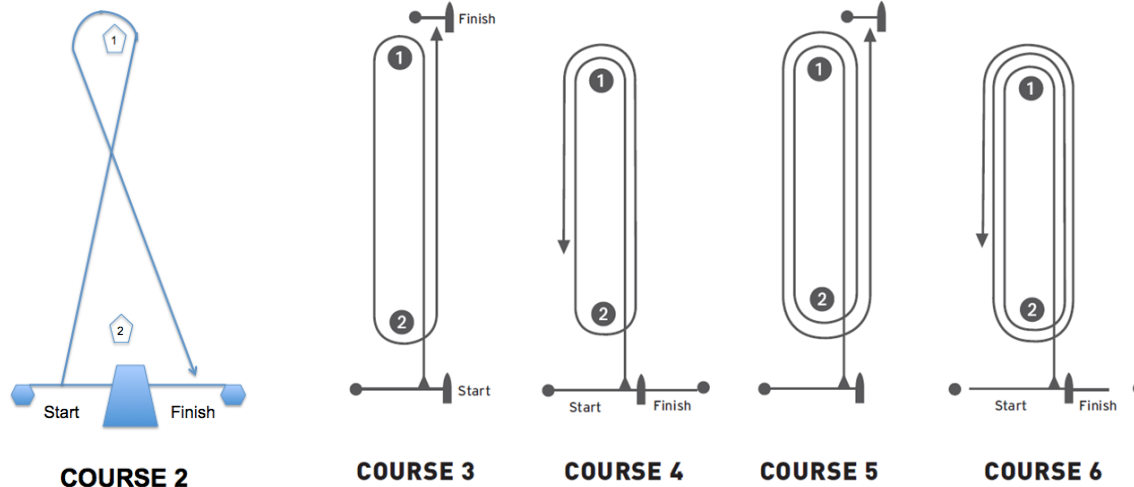


First Mate Sponsors



## EAST COURSE SAILING INSTRUCTIONS

### Attachment 2 – Courses:



On ALL COURSES Mark 1 includes a windward mark and an offset mark, both of which must be left to port. If the offset mark is not set, competitors shall commence the leeward leg after rounding the windward mark.

**C O U R S E 2 - "2"** (two legs): This course is windward, leeward to finish. Finish is on the opposite side of the Signal Boat from the starting line. The marks shall be rounded in order of 1, finish. Mark 2, if in place, may be left on either hand on all legs.

**C O U R S E 3 - "3"** (three legs): This course is windward, leeward, finish to windward. The marks shall be rounded in order of 1,2, finish. Mark 2 may be left on either hand on the first windward leg and Mark 1 may be left on either hand on the finishing leg.

**C O U R S E 4 - "4"** (four legs): This course is a windward, leeward, twice around, finish to leeward. The marks will be rounded in the order of 1, 2, 1, finish. Mark 2 may be left on either hand on the first windward leg and on the finishing leg.

**C O U R S E 5 - "5"** (five legs): This course is a windward, leeward, twice around, finish to windward. The marks shall be rounded in the order of 1, 2, 1, 2, finish. Mark 2 may be left on either hand on the first windward leg and Mark 1 may be left on either hand on the finishing leg.

**C O U R S E 6 - "6"** (six legs): This course is a windward, leeward, three times around, finish to leeward. The marks shall be rounded in the order of 1, 2, 1, 2, 1, finish. Mark 2 may be left on either hand on the first windward leg and on the finishing leg.

*First Mate Sponsors*



# EAST COURSE SAILING INSTRUCTIONS

## Many Thanks to our Sponsors:

Lipscomb, Gregory & Young Group  
**DAVENPORT & COMPANY**  
SINCE 1863

**VIRGINIA SPORTSMAN**  
*A state of mind • A way of life*  
An Exclusive Lifestyle Magazine



**Chesapeake Bay**  
SAILING  
BOATING AT ITS BEST

Suez  
The London Company  
Chesapeake Boat Works  
C & F Mortgage  
Latell Sail Makers

Local Voice Media  
Fishing Bay Yacht Club  
Stingray Harbour Yacht Club  
J & W Seafood  
Deltaville Market

Wine for Cures  
Allegra Richmond  
David & Laura Christian  
Bill & Debbie Brooks  
Bob & Deb McKinley

### National Supporters

---



SAILING WORLD



### First Mate Sponsors





## 20<sup>th</sup> Annual Southern Chesapeake Leukemia Cup Regatta July 13-15, 2018

The Leukemia & Lymphoma Society and Fishing Bay Yacht Club are co-organizing authorities for this regatta. Fishing Bay Yacht Club is the Host Club, and racing will be conducted in the Piankatank River and Chesapeake Bay at the mouth of the Piankatank River.

### FISHING BAY COURSE SAILING INSTRUCTIONS

#### 1 RULES

- 1.1 The regatta will be governed by the rules as defined in *The Racing Rules of Sailing*.

#### 2 NOTICES TO COMPETITORS

Notices to competitors will be posted on the official notice board located inside the FBYC Main Clubhouse first floor screen porch, and may also be available at the Deltaville Maritime Museum and on the Yacht Scoring site ([www.yachtscoring.com](http://www.yachtscoring.com)).

#### 3 CHANGES TO SAILING INSTRUCTIONS

- 3.1 Any change to the sailing instructions will be posted before 0800 on the day it will take effect, except that any change to the schedule of races will be posted by 2000 on the day before it will take effect.
- 3.2 The Race Committee may make changes to the sailing instructions on the water by displaying Code Flag "L" and announcing such changes on VHF channel 69.

#### 4 SIGNALS MADE ASHORE

- 4.1 Signals made ashore will be displayed on the flagpole on the FBYC Fishing Bay Dock.
- 4.2 When flag AP is displayed ashore, '1 minute' is replaced with 'not less than 45 minutes' after flag AP is lowered ashore with one sound signal. This changes race signal AP.
- 4.3 When a change to the sailing instructions is posted, Code Flag "L" will be displayed on the FBYC Dock.
- 4.4 The display of code flag "B" made ashore means that the Protest Time has begun.
- 4.5 When flag 'Y' is displayed ashore, Rule 40 applies at all times while afloat. This changes the Part 4 preamble.

#### 5 SCHEDULE OF RACES

- 5.1 The scheduled time of the warning signal for the first race on Saturday is 1100.
- 5.2 The schedule time of the warning signal for the first race on Sunday is 1000.

*First Mate Sponsors*



## FISHING BAY COURSE SAILING INSTRUCTIONS

**5.3** On Sunday, no warning signal will be made after 1500.

### **6 CLASS FLAGS**

Class Flags shall be white flags with class insignia, or as posted as an addendum to the Sailing Instructions per *Section 3, Changes to Sailing Instructions*.

### **7 RACING AREAS**

Attachment 1 shows the location of racing areas.

### **8 THE COURSES**

**8.1** The diagrams in Attachment 2 show the courses, including the approximate angles between legs, the order in which marks are to be passed, and the side on which each mark is to be left.

**8.2** The course for each class will be designated by displaying letter(s) on the Race Committee Signal Boat. A number following the course designation will indicate the number of legs. (Other examples include: "W2" is windward/leeward, "W4" is windward/leeward/windward/leeward, and "H5" is windward/leeward/windward/leeward/windward.)

**8.3** The standard "W" course configuration includes a leeward mark positioned to windward of the start/finish line. The leeward mark is not a mark of the course during the first leg of the course or, in the event of a downwind finish, during the last leg of the course. In the absence of this leeward mark, the boats shall round the starting line mark (pin).

**8.4** The "S" letter following the course designation indicates that boats finish to Starboard of the Race Committee boat, between the Race Committee boat and a finishing mark, when sailing to windward.

**8.5** The "L" letter following the course designation "W" indicates that the Race Committee will set two windward marks; the classes designated to sail the "L" course will round the farther windward mark, and all other classes will round the nearer windward mark.

### **9 MARKS**

**9.1** The rounding marks will be inflatable marks.

**9.2** The starting and finishing marks may be inflatable cylindrical or tetrahedron shaped marks.

### **10 CHECK IN**

**10.1** Each boat is requested, as a courtesy, to check-in at the Race Committee signal boat by hailing her sail number and class and being acknowledged by the Race Committee

*First Mate Sponsors*



## FISHING BAY COURSE SAILING INSTRUCTIONS

before the warning signal for the first race of the day. A boat may not protest a breach of this instruction. This changes Rule 60.1.

### **11 THE START**

- 11.1** Races will be started by using Rule 26 with the warning signal made five (5) minutes before the starting signal.
- 11.2** The starting line will be between the staff from which a yellow or orange flag is displayed on the RC signal boat and the starting line mark (pin).
- 11.3** Boats whose warning signal has not been made shall avoid the starting area.
- 11.4** A boat starting later than 4 minutes after her starting signal will be scored Did Not Start without a hearing. This changes rule A4 and A5.
- 11.5** The Race Committee intends to hail and announce boats identified as OCS on VHF radio. Fishing Bay Course will broadcast on VHF channel 69. Failure to hail, the order of the hail, the hail of some but not all, or the untimely hail of OCS boats will not be grounds for redress. This changes RRS 62.
- 11.6** After a long postponement, to alert boats that a race or sequence of races will begin soon, multiple short sounds may be made before a warning signal is displayed. This is not a timed sound signal.

### **12 CHANGE OF THE NEXT LEG OF THE COURSE**

- 12.1** To change the next leg of the course, the race committee will lay a new yellow mark (or move the finishing line) and remove the original mark as soon as practicable. When in a subsequent change a new mark is replaced, it will be replaced by an original mark.
- 12.2** If during the signalling of a change of course, one or more class flags are flown under the change of course Flag "C", then the change applies only to those indicated classes. If there are no class flags flown, the change is applicable to all classes. This changes Rule 33.

### **13 THE FINISH**

- 13.1** The finishing line will be between a yellow or orange flag (or staff with code flag "S", if the course has been shortened) on a committee boat and the designated finishing mark.
- 13.3** In a race that has not been shortened, the finish line shall be crossed from the direction of the last mark preceding the finishing mark, regardless of the position of the committee boat.
- 13.2** If the Race Committee intends to conduct another race, the code flag "Second Substitute" will be displayed on the Race Committee finish boat while boats are finishing.

*First Mate Sponsors*



## FISHING BAY COURSE SAILING INSTRUCTIONS

**13.3** A boat sailing the course whose finish position cannot be changed no matter how she finishes, may be requested by the Race Committee to immediately return to the starting area. Such a boat will be scored as though she had completed the race. This changes Rules 28.1, 35, A4.1 and A4.2.

### **14 TIME LIMITS AND TARGET TIMES**

**14.1** Time limit will be 80 minutes for each class.

**14.2** Boats failing to finish within thirty (30) minutes after the first boat sails the course and finishes will be scored "Did Not Finish" without a hearing. This changes Rules 35, A4 and A5.

### **15 PROTESTS AND REQUESTS FOR REDRESS**

**15.1** A boat intending to protest another boat must so notify the Race Committee by hail immediately after finishing or retiring. This notification must include the boat name and/or sail number of the boat being protested and must be acknowledged by the Race Committee. This changes Rule 61.1(a).

**15.2** Protest forms are available at the Race Committee boat and at the Race Office, located on Saturday at the Tea House at the Deltaville Maritime Museum and on Sunday at Fishing Bay Yacht Club. Protests and requests for redress or reopening shall be delivered to the Race Office within the appropriate time limit.

**15.3** The protest time limit is 60 minutes after the arrival of the Race Committee signal boat at the dock. The same time limit applies to protests by the Race Committee and Protest Committee about incidents they observe in the racing area and to requests for redress. This changes rules 61.3 and 62.2. The Race Committee will post the end of the protest time limit on the Notice Board at the Race Office at the Deltaville Maritime Museum.

**15.4** If the Race Committee posts a list of boats scored OCS, ZFP, or BFD on the Official Notice Board before expiration of the protest time limit, the time for filing a request for redress based on such a score shall be made no later than 15 minutes after the protest time limit. This changes Rule 62.2.

**15.5** Notices will be posted no later than 15 minutes after the protest time limit to inform competitors of hearings in which they are parties or named as witnesses. Hearings on Saturday will be held in Tea House at the Deltaville Maritime Museum. Hearings on Sunday will be held upstairs in the main clubhouse at Fishing Bay Yacht Club.

**15.4** Each boat must check the Official Notice Board to determine if it is involved in a protest. A hearing may be held if a party or witness is not available.

**15.5** Notices of protests by the race committee or protest committee will be posted to inform boats under rule 61.1(b).

*First Mate Sponsors*



## FISHING BAY COURSE SAILING INSTRUCTIONS

**15.6** Breaches of instructions 17, 18, and 19 will not be grounds for a protest by a boat. This changes rule 60.1(a). Penalties for these breaches may be less than disqualification if the protest committee so decides.

## **16 SCORING**

**16.1** The scoring system is the Low Point System of Appendix A. There will be no throw-outs.

## **17 SAFETY REGULATIONS**

**17.1** A boat that retires from a race shall notify the race committee as soon as possible. Failure to notify as soon as possible will result in disqualification for the last race the boat started prior to retiring.

**17.2** A boat shall carry all equipment required by her class rules. If not so specified, she shall also carry one USCG-approved PFD for each person on board.

**17.3** The legal drinking age in Virginia is 21. Minors will not be served and proof of age will be required. Intoxication or discourteous behaviour will be grounds for expulsion from the events. Boat captains and owners will be responsible for the actions of their crew. A BOAT IS SUBJECT TO IMMEDIATE DISQUALIFICATION BY THE PROTEST COMMITTEE IF ANY UNDER-AGE CREW IS FOUND TO BE ILLEGALLY CONSUMING ALCOHOL.

## **18 TRASH DISPOSAL**

A competitor shall not intentionally put trash in the water. Trash may be placed aboard support and race committee boats.

## **19 RADIO COMMUNICATION**

**19.1** Except in an emergency, a boat shall neither make radio transmissions while racing nor receive radio communications not available to all boats. This restriction also applies to mobile telephones.

## **20 PRIZES**

Prizes will be awarded to the boats placing first, second, and third in the regatta.

## **21 DISCLAIMER OF LIABILITY**

Competitors participate in the regatta entirely at their own risk. See rule 4, Decision to Race. The organizing authority will not accept any liability for material damage or personal injury or death sustained in conjunction with or prior to, during, or after the regatta.

*2018 Fishing Bay Course Sis 06-27-18.docx*

*First Mate Sponsors*



FISHING BAY COURSE SAILING INSTRUCTIONS

Attachment 1 – Racing Area



Many Thanks to our Sponsors:

Lipscomb, Gregory & Young Group  
**DAVENPORT & COMPANY**  
 SINCE 1863

**VIRGINIA SPORTSMAN**  
*A State of Mind · A Way of Life*  
 An Exclusive Lifestyle Magazine



**Chesapeake Bay** MAGAZINE  
 BOATING AT ITS BEST

Suez  
 The London Company  
 Chesapeake Boat Works  
 C & F Mortgage  
 Latell Sail Makers

Local Voice Media  
 Fishing Bay Yacht Club  
 Stingray Harbour Yacht Club  
 J & W Seafood  
 Deltaville Market

Wine for Cures  
 Allegra Richmond  
 David & Laura Christian  
 Bill & Debbie Brooks  
 Bob & Deb McKinley

National Supporters

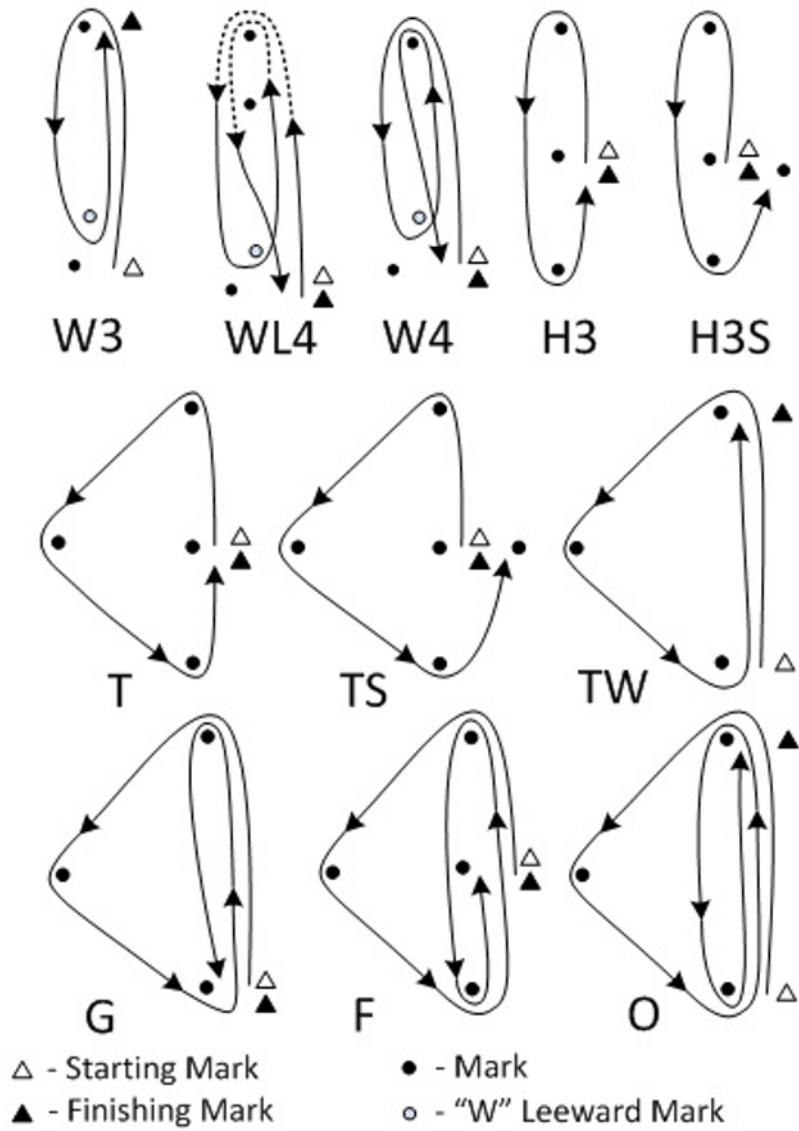


First Mate Sponsors



FISHING BAY COURSE SAILING INSTRUCTIONS

Attachment 2 – Courses:



A numeral indicates the number of LEGS if following a course designation "W", "WL", "H", or "T".

First Mate Sponsors

